

National Disability Institute
Accessibility - Accommodation
ASSISTIVE TECHNOLOGY LOAN
PROGRAM

Laurie Schaller

lschaller@ndi-inc.org

Manager, Financial Empowerment

AssistiveTechLoans.com

202-449-9521

Submitting Questions or Technical Difficulties

For Q&A: Please use the Q&A box to send any questions you have during the webinar to Laurie Schaller.

If you are listening by phone and not logged in to the webinar, you may also ask questions by emailing lschaller@ndi-inc.org.

National Disability Institute (NDI)

- We envision a society in which people with disabilities have the same opportunities to achieve financial stability and independence as people without disabilities.
- Our Mission is to collaborate and innovate to build a better financial future for people with disabilities and their families.

NDI's AT Loan Program

NDI received grant funding through the U.S. Department of Education's Rehabilitation Services Administration;

Our services include outreach and promotional webinars, financial education and guidance on spending plan development, referrals to financial counseling or programs that can help people get assistive technology.

The contents of this orientation were developed under a grant from the Department of Education. However, the content does not necessarily represent the policy of the Department of Education, and you should not assume endorsement by the Federal Government.

What is Assistive Technology?

Assistive technology (AT) is any technology, accommodation or accessible feature that can help a person perform an action that a person who does not have a disability, can typically do.

- AT ranges from apps, hearing and vision aids, smart home systems, smart phones, stair climbers, standing wheelchairs, home or vehicle modifications, adaptive recreational equipment, accessible housing pods, business equipment and more.
- [Our site spotlights new AT equipment and products](#)

Orientation Welcome

Today we will spotlight [Permobil](#) and standing wheelchair options.

We will discuss:

How a standing wheelchair can be life changing;

A review of standing wheelchair options;

How to know if a standing wheelchair is right for you;

Review of possible funding for assistive technology, including [Permobil](#) standing wheelchairs.



permobil

Permobil F5 Corpus VS

Stand without compromise




Eleni Halkiotis, MOT, OTR/L, ATP/SMS

Regional Clinical Education Manager
Permobil, Business Region Americas

Permobil Representative Locator

Find Permobil representatives closest to you



Enter your zip code: [Search](#)



Adam Crawford
Territory Sales Manager, Full-line

Talk to Sales if you have any questions about our products: TILite, Permobil Power, SmartDrive, Roho, Comfort Company, Trushape

[Contact Adam Crawford](#)



Allison Fracchia
Territory Sales Manager, Full-line

Talk to Sales if you have any questions about our products: TILite, Permobil Power, SmartDrive, Roho, Comfort Company, Trushape

[Find out more about me... -- Learn more](#)

[Contact Allison Fracchia](#)

[Find Permobil representatives closest to you](#)

Permobil Founder



“Every person with a disability has the right to have his or her disability compensated as far as possible by aids with the same technical standard as those we all use in our everyday lives.”

Agenda

1. Why stand?
2. Permobil F5 Corpus VS Product Features
3. New! Now available with Group 3 and Group 4 base codes
4. Permobil Power Standing Training

Introducing the
Permobil
F5 Corpus VS!



Permobil launched its first standing power wheelchair!



1977





Why stand?

Cardiovascular and Respiratory



Body Function and Structure

- Respiratory System

Benefits of Standing

- Improved breathing when standing

(Eng et al 2001)



Body Function and Structure

- Circulatory system

Benefits of Standing

- Improve circulation when standing results in reduced edema.

(Eng et al 2001)

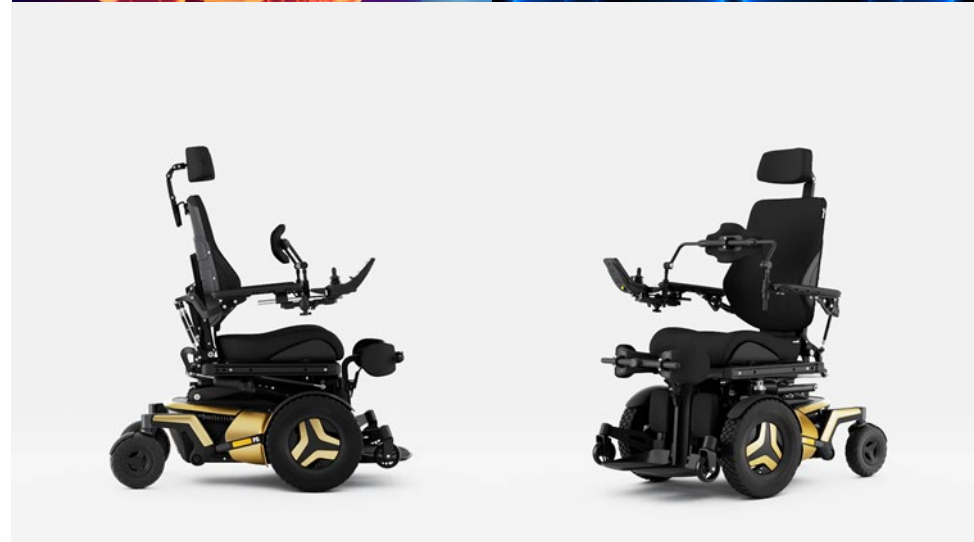
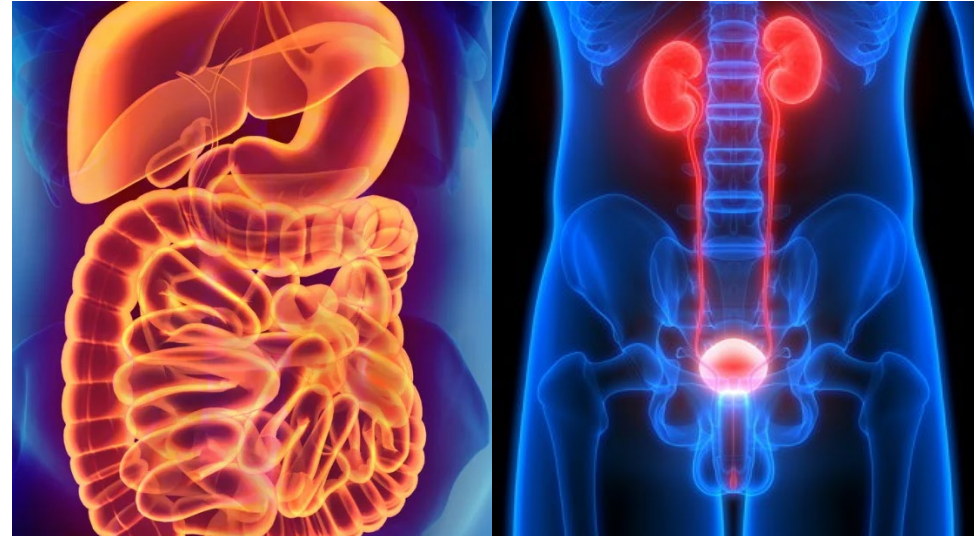
Bowel and Bladder Function

Urinary Tract System

- Standing reduces incidence and recurrence rate of calculi in the kidneys and bladder
- Standing reduces the risk of urinary tract infections (*Eng et al, 2001*)

Bowel

- Standing in a dynamic fashion allows for the stretch of the colon and stimulates bowel movement within the colon. (*Kwok et al 2014*)





Body Structure and Function

- Skeletal System

Benefits of Standing

- Maintains bone mineral density
- Reduces risk for fractures

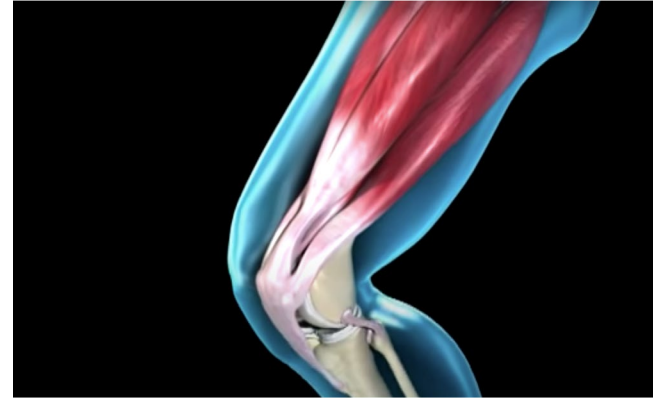
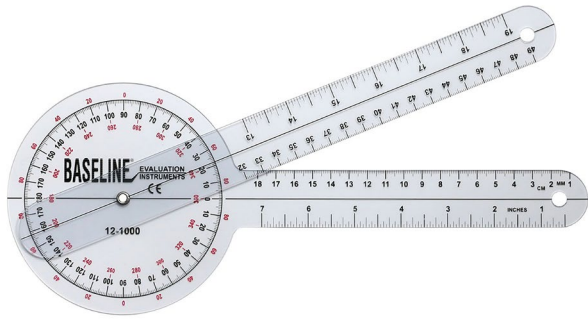
Dynamic standing – increased BMD

- Passive (static) standing – maintained baseline BMD

Both improved BMD (dynamic with greater results)

(Damcott, Blochlinger, & Foulds, 2013)

Range of Motion, Spasticity, and Contractures



Improves ROM

- Standing has shown benefits in range of motion and muscle length

Reduction in Spasticity

- Standing resulted in decreased spasticity in both adults and children
- Larger effect on those with frequent spasticity
- More frequent standing for longer effects

Contractures

- Precaution
 - Specialized programming of the stand sequence

Risk Reduction- Pressure Injury

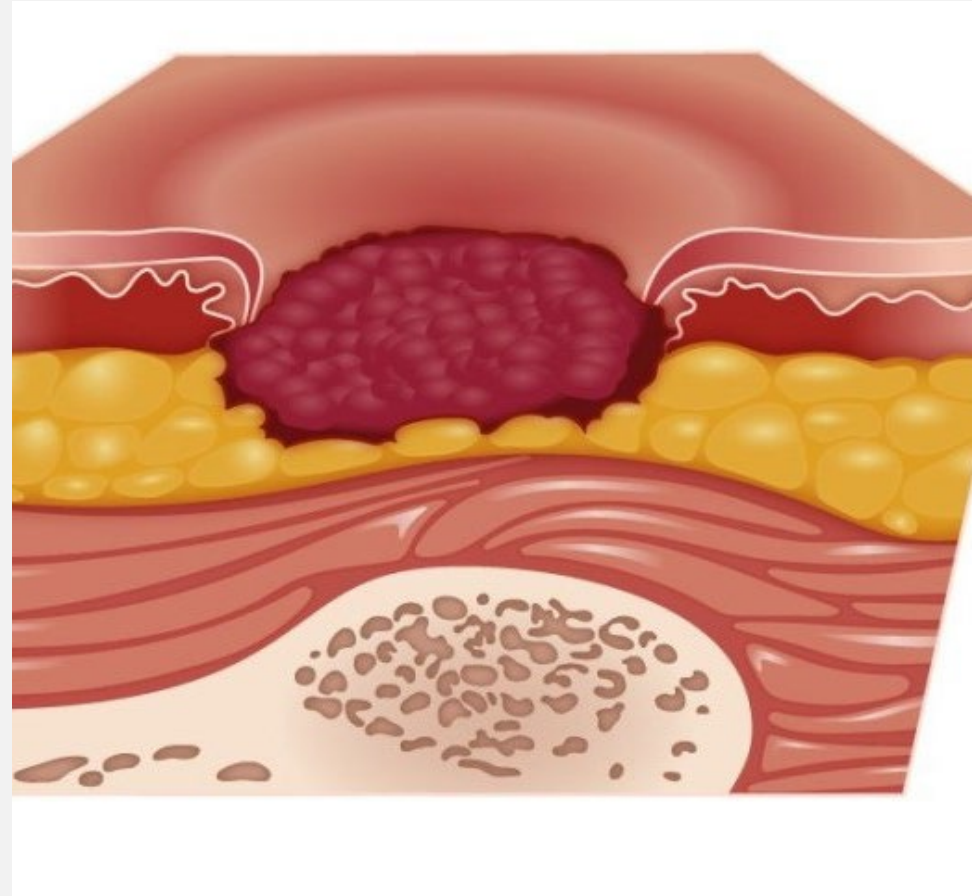
Body Structure and Function

- Skin integrity

Benefits of Standing

- Body weight loaded on lower extremities
- Maximum reduction of pressure from ischial tuberosities

(Sprigle, Maurer, & Sorenblum, 2009)



Functional Benefits

Mobility Related ADLs



**Donning/Doffing
Clothing**



**Meal Prep/
Cooking**



Personal Care



Toileting



School Access



**Work
Environment**



Life Roles



Social Outings



F5 Corpus VS

Permobil F5 Corpus VS (continued)

Stand without compromise



Best-in-class base performance

Customizable standing sequences

Programmable articulating power footplate

Full range of power seat functions

Functional drive speeds in elevate and standing

Ability for the system to adapt and change over time

Best in class base performance

Front wheel drive for proximity to surfaces & navigation of tight corners and obstacle

Increased stability with ideal center of gravity and weight distribution

ComfortRide Pro suspension stays active in any position

Seamless integration of seating system to chassis



Best in class base performance (2)

Why front wheel drive?

Proximity to surfaces for function

Navigation of tight corners

Obstacle negotiation

Suspension

Stability

Lower extremity positioning

Tracking technology

Group 24 batteries, greatest range capability



Why front wheel drive?

Bathroom navigation



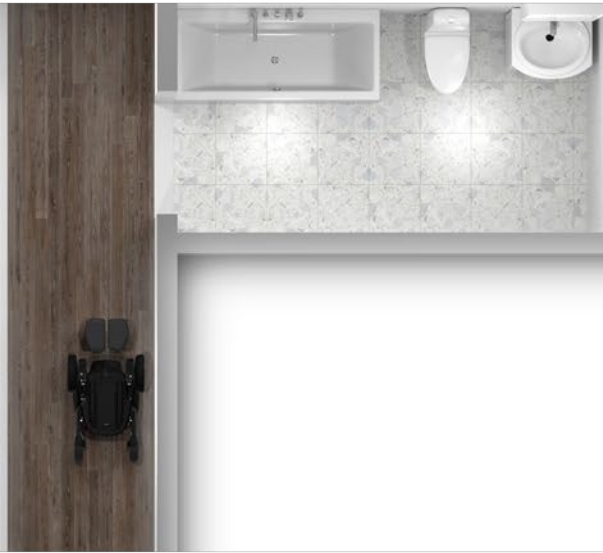
Front wheel drive



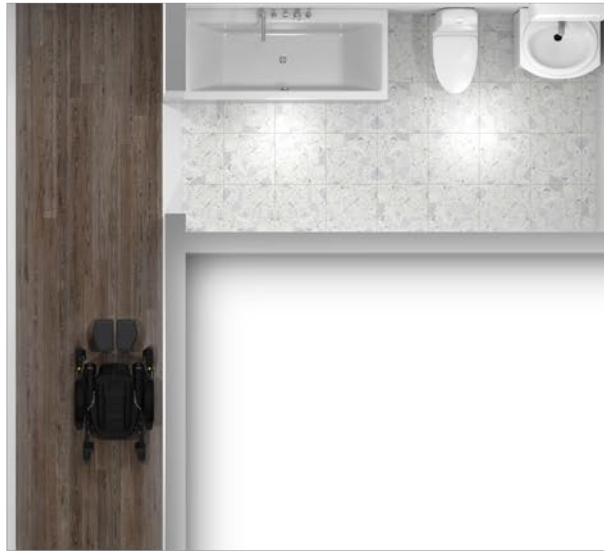
Mid wheel drive

Why front wheel drive? (2)

Strategies for hallway maneuverability



Front wheel drive



Mid wheel drive



Rear wheel drive

Why front wheel drive? (3)

Obstacle negotiation

Drive wheel position may reduce vibrations

Larger drive wheels make first contact

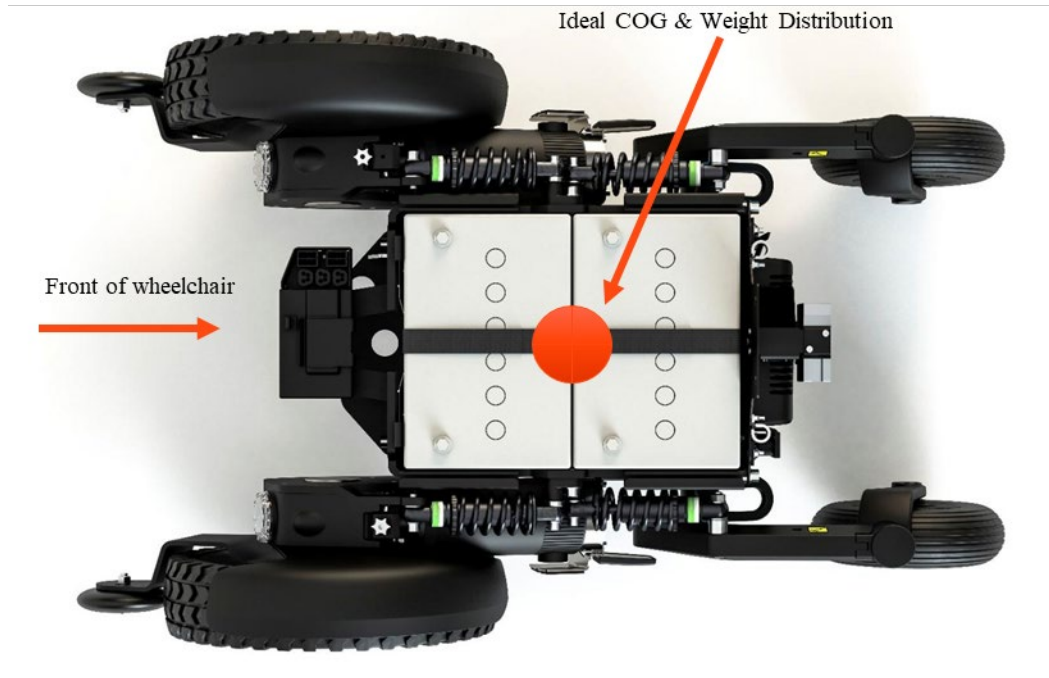
Motors pull you up the obstacle

One set of casters = less opportunity to get stuck vs. 2 sets of casters with midwheel drive



Why front wheel drive? (4)

Ideal center of gravity and weight distribution



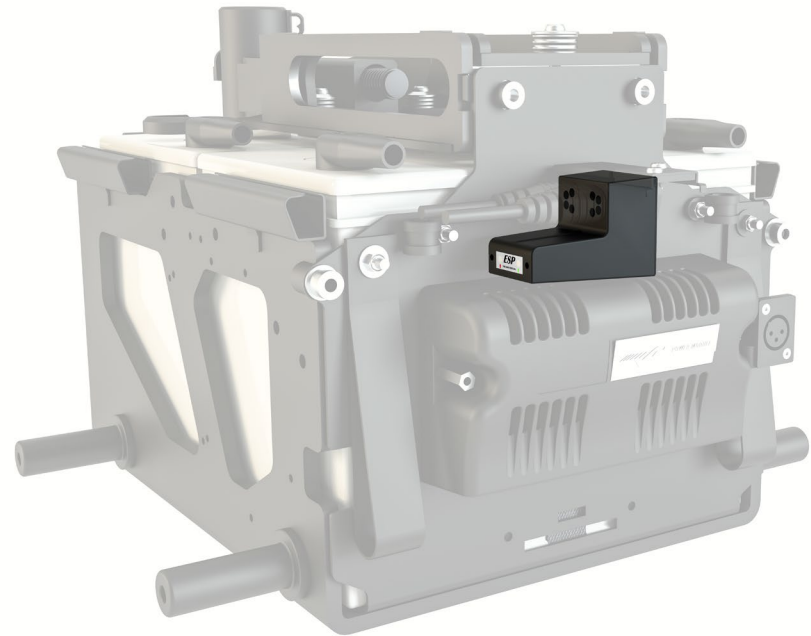


Why front wheel drive? (continued)

Enhanced Steering Performance

Provide safer driving properties

Customizable to the user through programming



Customizable standing sequences



Whether it's sit to stand, supine to stand or anything in between, find the perfection position

With **fully programmable standing**, match the power standing function to your client's unique needs, for example:

- Limitations in range of motion
- Blood pressure regulation
- Comfort
- Positional demands for functional tasks

Programmable articulating power footplates



Use Corpus VS power elevating legrest to program footplate height in standing

Help **maintain positioning** within the seating system throughout the range of movement

Prevents “sinking” into the seating system

Full range of power seat functions



Tilt: -45 to 50 degrees

Recline: 180 degrees

Elevating leg rest: 90-180 degrees

ActiveHeight seat elevation: 14"

Ease use with:

Memory seat functions

Independent Repositioning Mode

Functional drive speeds in elevate and standing

Stand and drive with intelligent front support wheels that automatically deploy during standing

- Provide stability for stand and drive
- Off the ground when not in standing for optimal obstacle negotiation



Functional **1.7 mph** drive speed while in standing, and up to **3.2 mph** in ActiveHeight seat elevation

Ability for the system to adapt and change



People change over time, their complex rehab solutions should as well

- Programmable stand sequence
- Ability to change back support and legrest position while in standing
- Growth capacity

Permobil F5 Corpus VS (continued further)

Stand for more



The F5 Corpus VS is now available with Group 3 and Group 4 base coding making it more accessible than ever to pursue power standing

Stand for more medical, functional, and social/emotional benefits

Expect more from your power standing wheelchair

F5 Corpus VS

Group 3 vs. Group 4



	Group 3	Group 4
Best-in class base performance	✓	✓
Fully customizable standing sequences	✓	✓
Articulating power footplate	✓	✓
Functional drive speeds in standing	✓	✓
Full range of power tilt, recline, & legrest elevation	✓	✓
14" of ActiveHeight seat elevation	✓	✓
Optional no charge accessories: <i>LED light kit, USB charger, MyPermobil</i>	✓	✓
Max speed of 7.5 mph	✗	✓
2-year warranty	✗	✓
Preventative maintenance plan	✗	✓
Hydrographic color options included	✗	✓
One-time color change included	✗	✓

Maximum speed

F5 Corpus VS

5.8 mph

Group 3

7.5 mph

Group 4

Warranty

F5 Corpus VS

1-year

Group 3

2-year

Group 4

Preventative maintenance plan

Included for no additional charge with Group 4



Access to an annual multi-point inspection. The inspection is available upon request and performed by a Permobil employee



Report of findings to share with the client's equipment provider



One time replacement of wear and tear items that are not typically covered under warranty



One time color change

Included with Group 4 selection



Hydrographic color options

Included with Group 4 selection



Carbon
Fiber



Mossy Oak[®]
Breakup[®]
Country[™]



CDG
Poly



Water
Lily



Fireball



Midnight
Patriot



American
Liberty



Stand for More Function and Life Participation

Stand for more

Functional benefits



Higher levels of **independence**

handwashing/reaching
independence in
toileting

(Kenyon et al 2021;
Vorster et al 2019;
Bayley, 2020)



Daily routines
completed **faster**

Decreased demand
for care

Higher level of
involvement for the
individual



Increased **participation**

Play

Working

Singing in choirs

Stand for more (2)

Psychosocial benefits



Indications that power standing has a positive impact on **mental health and self esteem**

People **feel healthier** when standing

Driving while standing

Improved self image

Improved interaction

(Vorster, et al 2019; Goodwin, 2018)

Summary



1. Group 3 & Group 4 options
2. Stand without Compromise
3. Customizable standing sequences
4. Permobil Rep. Locator

Find Permobil representatives
closest to you

Thank you!

permobil

Employment and AT Funding

State Vocational Rehabilitation Service Agencies, the Commission for the Blind and the Department of Labor and an employer may pay for AT devices for people who have education and/or employment goals.

Department of Labor

- New Jersey
 - [Division of Vocational Rehabilitation Services \(DVRS\)](#)
 - [New Jersey Commission for the Blind and Visually Impaired \(CBVI\)](#)
- New York
 - [Adult Career and Continuing Education Services-Vocational Rehabilitation \(ACCES-VR\)](#)
 - [New York State Commission for the Blind \(NYSCB\)](#)

Medicaid Waiver

Medicaid Waiver may pay for assistive technology that helps a person live more independently in their community and/or work.

[New Jersey Community Waiver](#)

[New York Medicaid Waiver](#)

How to Save and Afford AT

SSI and many types of Medicaid have resource limits of \$2,000 for an individual, \$3,000 for a couple; may be more, for larger households.

Social Security Administration provides work supports for SSI and SSDI beneficiaries who work: the **Impairment Related Work Expense (IRWE)** may allow a person to purchase AT while retaining benefits longer or at an increased level.

However, there are protected savings opportunities available that allow SSI and Medicaid beneficiaries to save more and continue to receive SSI benefits and Medicaid.

- **Plan for Achieving Self-Support (PASS)** to save income towards education that leads to employment goal expenses; and
- **Achieve a Better Life Experience: (ABLE Act)**

[SSA information on protected savings.](#)

ABLE Act

A person who has a disability since before age 26, may open an ABLE savings / investment account at any age.

New Jersey and New York offer ABLE savings accounts; other ABLE plans are available to choose from too.

- Savings up to \$100,000 does not count towards the **SSI resource limit of \$2,000.**
- Any amount of ABLE savings does not impact any type of **Medicaid** eligibility.

An ABLE account owner, friends and family, Special Needs or Pooled Trust or a 529 college savings plan may **contribute** up to \$16,000 into ABLE annually.

An ABLE account owner who works and does not have contributions deposited into a retirement account may contribute up to an additional \$12,880 from their employment **earnings** into their ABLE account.

This can total **\$28,880 for 2022!**

[The ABLE National Resource Center Provides Free Information](#)

ABLE Qualified Disability Expenses

- Assistive technology;
- Education;
- Basic living expenses including food and shelter;
- Housing including utilities, rent, modification, purchase, property taxes;
- Transportation;
- Employment training and support;
- Personal support services and respite care;
- Health care expenses;
- Disability related vacations and recreational activities;
- Legal fees and financial management;
- Funeral and burial expenses.

NDI's Loan Program

- NDI partners Spring Bank and Bryn Mawr Trust to issue and service pre-qualified loans from \$500 to \$30,000+ in New Jersey and New York;
- NDI buys down the interest rate to 6% and 4% interest;
- NDI has deposited funds with these banks to guarantee defaults;

Our services include outreach and promotional webinars, financial education and guidance on spending plan development, referrals to financial counseling or programs that can help the individual acquire the accessible item at no cost, accessibility resource guide.

- NDI's repayment rate is 100%

NDI AT Resource Guides

- The NDI AT Resource Guides list grants, lending programs and other service providers who can help you select the best and most cost-effective AT to meet your needs;
- There are AT Demonstration programs listed where you can try out or borrow AT, sometimes - indefinitely;
- There are AT assessment services that can help you evaluate AT to meet your needs, abilities and activity levels and environment.

[Assistive Technology Guide for New York](#)

[Assistive Technology Guide for New Jersey](#)



FINANCIAL RESILIENCE CENTER



Online Resource Center for People with Disabilities and Chronic Health Conditions

[Financial Resilience Center](#)



Contact

Laurie Schaller

lschaller@ndi-inc.org

Manager, Financial Empowerment

AssistiveTechLoans.com

Phone and FAX: **(202) 449-9521**

[Webinars are recorded](#)

Community presentations available

Post webinar survey:

- What information was most helpful?
- Do you think [Permobil](#) will help you or your customers who need supports to be more independent in life or work.
- Do you need help finding a job?
- What additional questions do you have?
- Do you want to schedule a presentation for your agency or community organization?
- What type of AT would you like more information about?